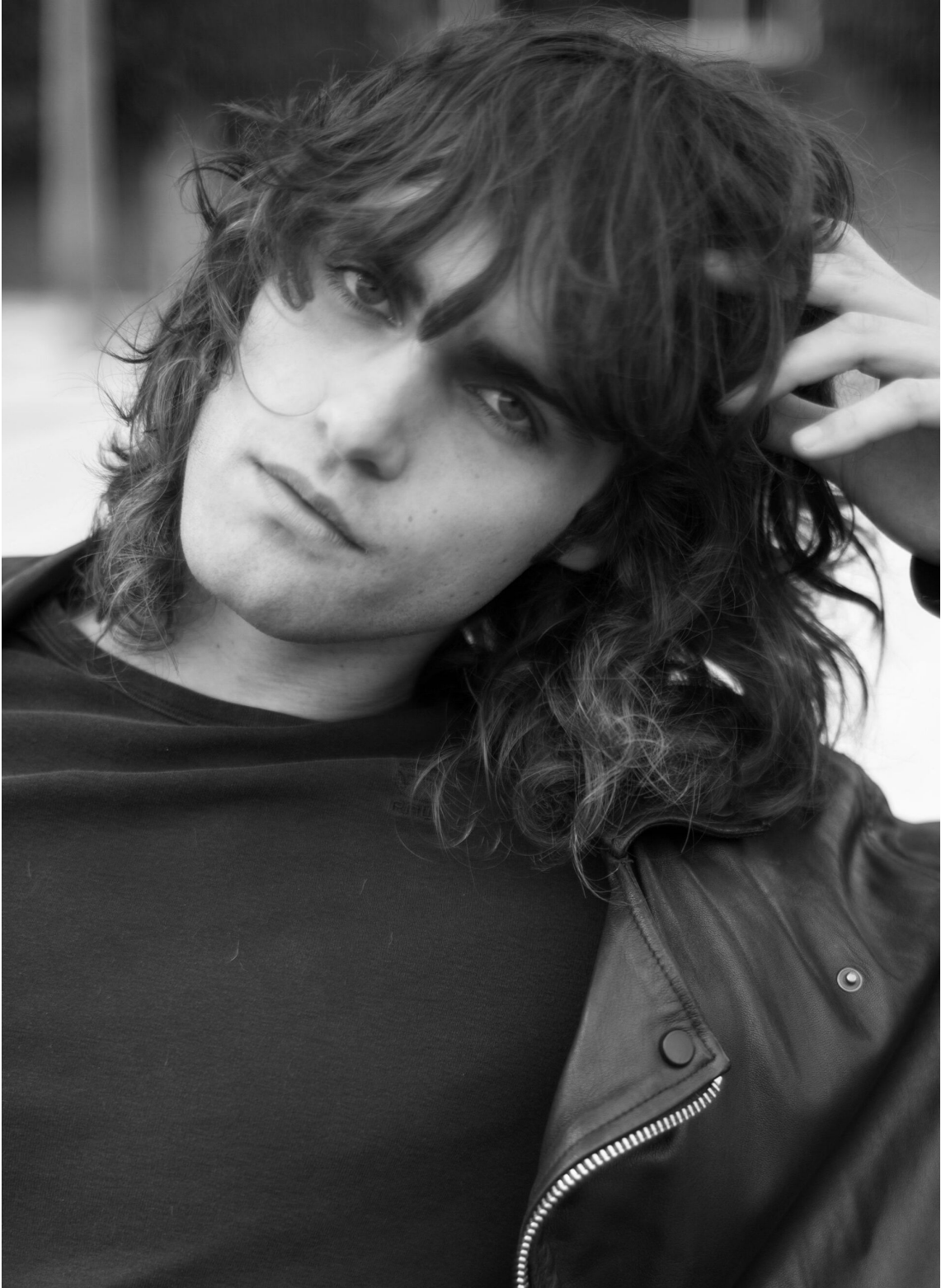


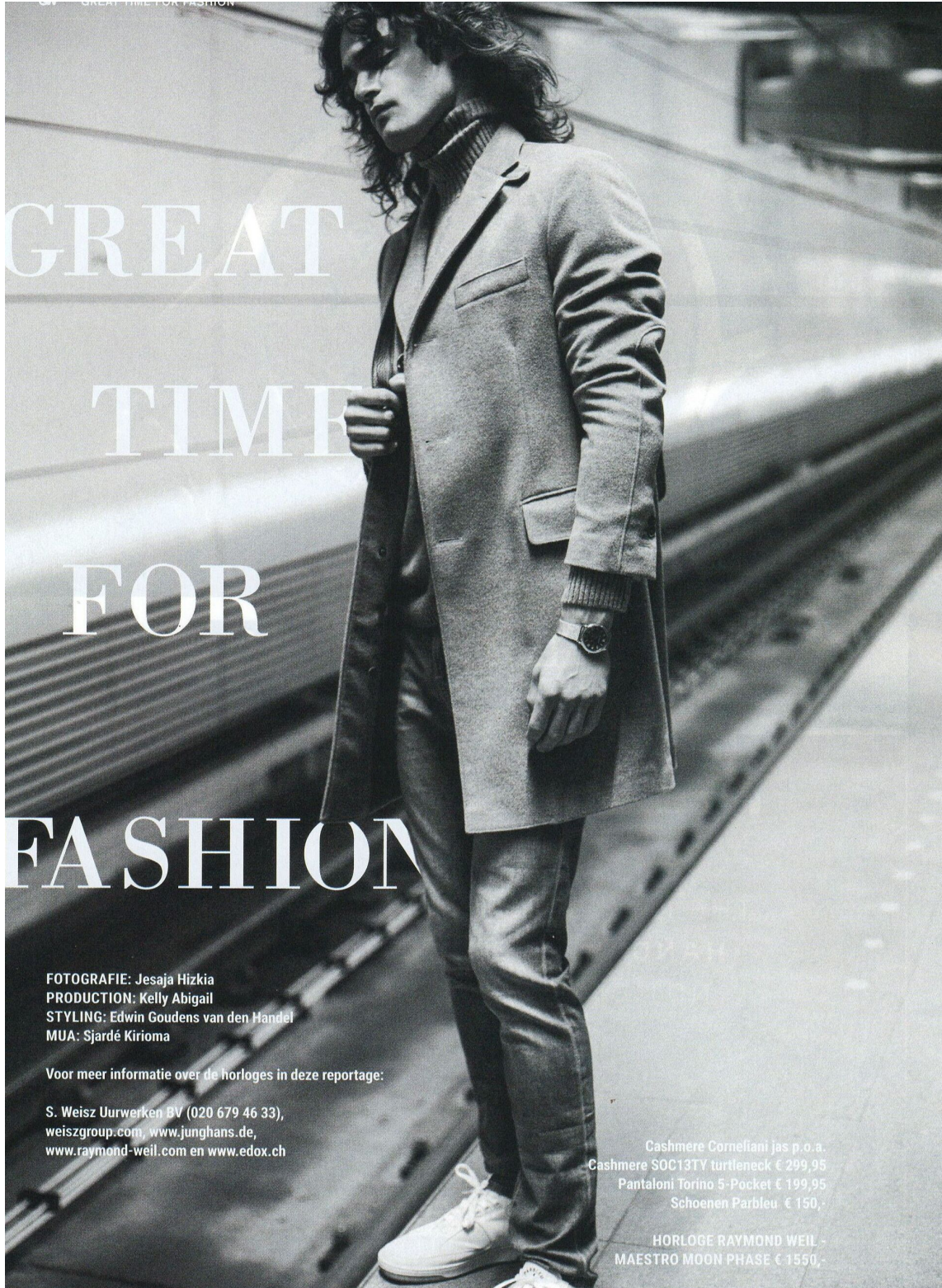
GUS DRAKE

height 6'3" · bust 38.5" · waist 31.5" · hips 38.5" · suit 50
shoes size 44 EU/13 US/10 UK · hair brown · eyes blue



GUS DRAKE

height 6'3" · bust 38.5" · waist 31.5" · hips 38.5" · suit 50
shoes size 44 EU/13 US/10 UK · hair brown · eyes blue



GREAT
TIME
FOR
FASHION

FOTOGRAFIE: Jesaja Hizkia
PRODUCTION: Kelly Abigail
STYLING: Edwin Goudens van den Handel
MUA: Sjardé Kirioma

Voor meer informatie over de horloges in deze reportage:

S. Weisz Uurwerken BV (020 679 46 33),
weiszgroup.com, www.junghans.de,
www.raymond-weil.com en www.edox.ch

Cashmere Corneliani jas p.o.a.
Cashmere SOC13TY turtleneck € 299,95
Pantaloni Torino 5-Pocket € 199,95
Schoenen Parbleu € 150,-

HORLOGE RAYMOND WEIL -
MAESTRO MOON PHASE € 1550,-

MGM
MODELS

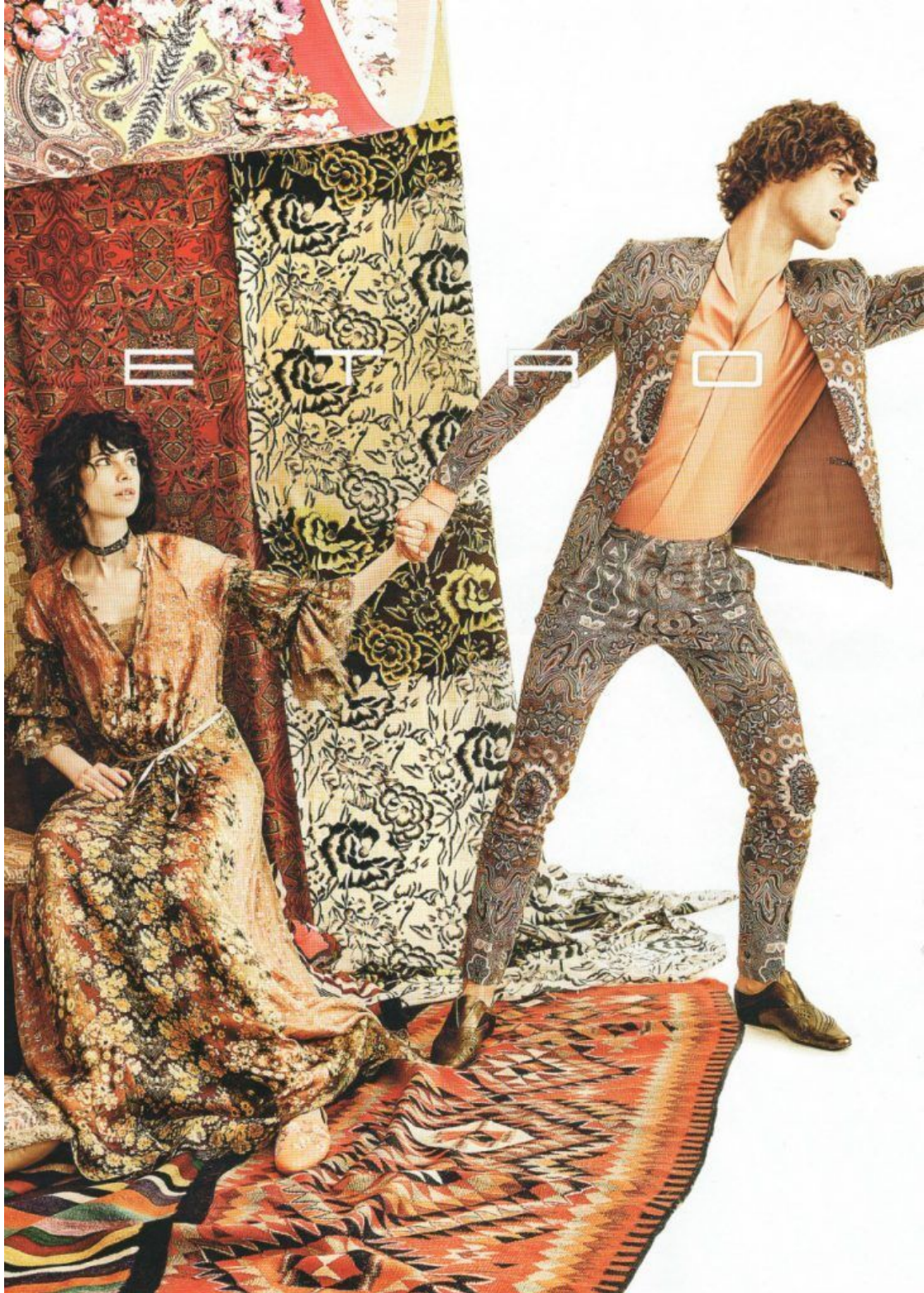
GUS DRAKE

height 6'3" · bust 38.5" · waist 31.5" · hips 38.5" · suit 50
shoes size 44 EU/13 US/10 UK · hair brown · eyes blue



GUS DRAKE

height 6'3" · bust 38.5" · waist 31.5" · hips 38.5" · suit 50
shoes size 44 EU/13 US/10 UK · hair brown · eyes blue



GUS DRAKE

height 6'3" · bust 38.5" · waist 31.5" · hips 38.5" · suit 50
shoes size 44 EU/13 US/10 UK · hair brown · eyes blue



MGM
MODELS

MGM
MODELS

GUS DRAKE

height 6'3" · bust 38.5" · waist 31.5" · hips 38.5" · suit 50
shoes size 44 EU/13 US/10 UK · hair brown · eyes blue



GUS DRAKE

height 6'3" · bust 38.5" · waist 31.5" · hips 38.5" · suit 50
shoes size 44 EU/13 US/10 UK · hair brown · eyes blue



Bouclé SOC13TY colbert € 499,95

Lambswool & cashmere SOC13TY turtleneck € 129,95

HORLOGE EDOX - LES BEMONTS 'SHADE OF TIME'

MGM
MODELS

GUS DRAKE

height 6'3" · bust 38.5" · waist 31.5" · hips 38.5" · suit 50
shoes size 44 EU/13 US/10 UK · hair brown · eyes blue



GUS DRAKE

height 6'3" · bust 38.5" · waist 31.5" · hips 38.5" · suit 50
shoes size 44 EU/13 US/10 UK · hair brown · eyes blue

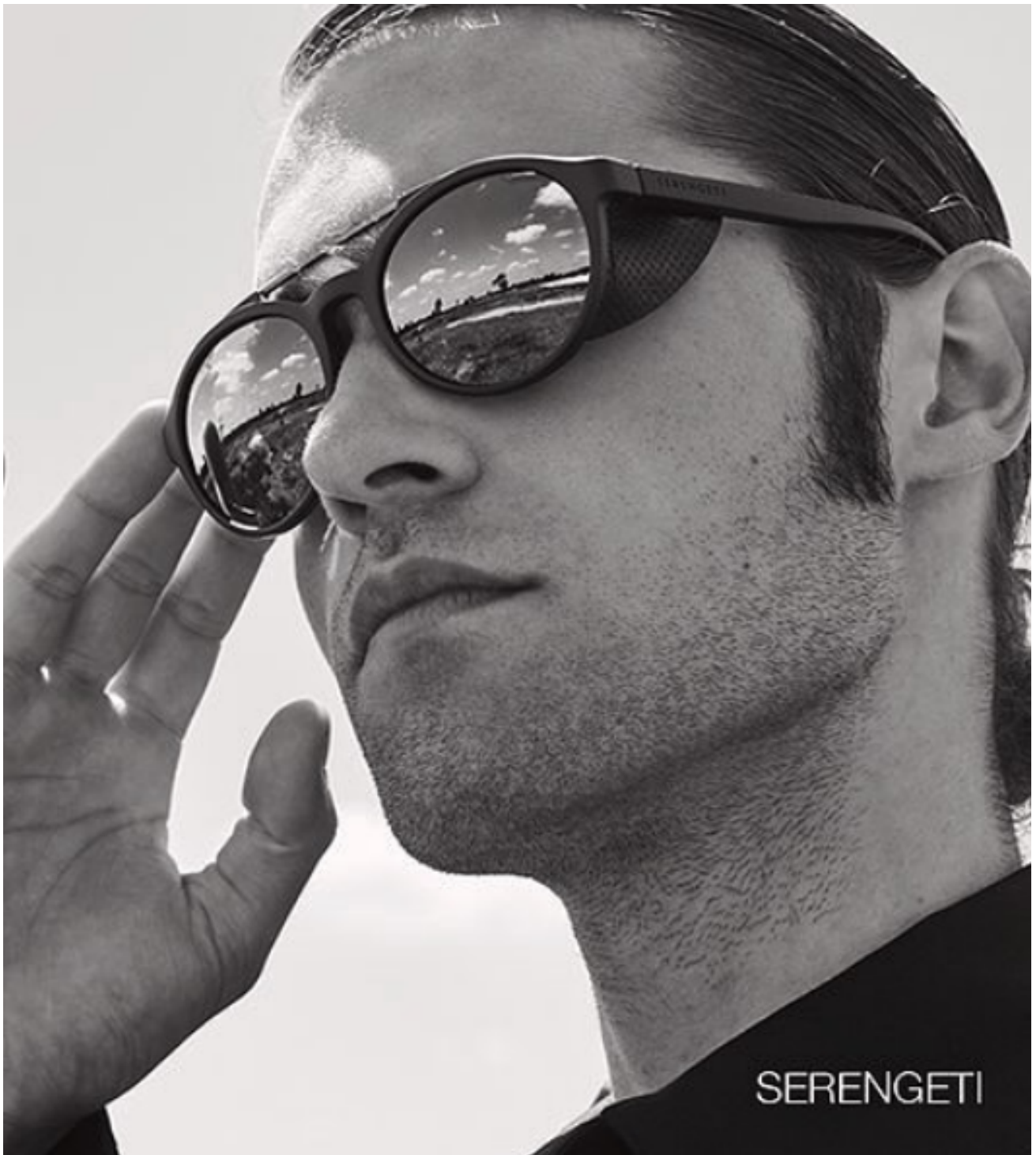


Cashmere Corneliani jas p.o.a.
Lambswol & cashmere Waits trui € 199,95
Cashmere SOC13TY beanie € 89,95

HORLOGE EDOX - LES BEMONTS
CHRONOGRAPH MOON PHASE € 750,-

GUS DRAKE

height 6'3" · bust 38.5" · waist 31.5" · hips 38.5" · suit 50
shoes size 44 EU/13 US/10 UK · hair brown · eyes blue



GUS DRAKE

height 6'3" · bust 38.5" · waist 31.5" · hips 38.5" · suit 50
shoes size 44 EU/13 US/10 UK · hair brown · eyes blue



GUS DRAKE

height 6'3" · bust 38.5" · waist 31.5" · hips 38.5" · suit 50
shoes size 44 EU/13 US/10 UK · hair brown · eyes blue



GUS DRAKE

height 6'3" · bust 38.5" · waist 31.5" · hips 38.5" · suit 50
shoes size 44 EU/13 US/10 UK · hair brown · eyes blue



GUS DRAKE

height 6'3" · bust 38.5" · waist 31.5" · hips 38.5" · suit 50
shoes size 44 EU/13 US/10 UK · hair brown · eyes blue

MGM
MODELS

MGM
MODELS

GUS DRAKE

height 6'3" · bust 38.5" · waist 31.5" · hips 38.5" · suit 50
shoes size 44 EU/13 US/10 UK · hair brown · eyes blue



GUS DRAKE

height 6'3" · bust 38.5" · waist 31.5" · hips 38.5" · suit 50
shoes size 44 EU/13 US/10 UK · hair brown · eyes blue



GUS DRAKE

height 6'3" · bust 38.5" · waist 31.5" · hips 38.5" · suit 50
shoes size 44 EU/13 US/10 UK · hair brown · eyes blue



THE MALE TOOLS &
DEPOT
ORIGINAL FORMULAS

MGM
MODELS

GUS DRAKE

height 6'3" · bust 38.5" · waist 31.5" · hips 38.5" · suit 50
shoes size 44 EU/13 US/10 UK · hair brown · eyes blue

